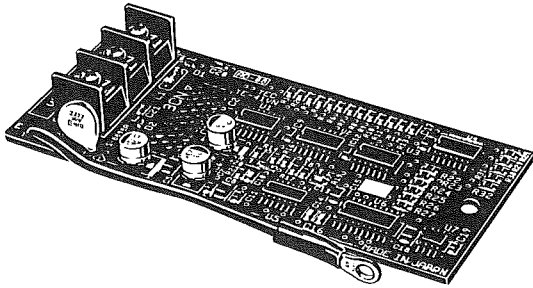


OMRON

Model 3G3IV-PA008 ANALOG MONITOR CARD

INSTRUCTION SHEET

Thank you for purchasing an OMRON product. Read this thoroughly and familiarize yourself with the functions and characteristics of the product before using it. Keep this instruction sheet for future reference.



OMRON Corporation

©OMRON Corporation 1991 All Rights Reserved.

The analog monitor card 3G3IV-PA008 (hereinafter called PA008)*, an on-board type option card, is mounted on the inverter control board to output analog signals for monitoring the inverter outputs (output frequency, output current, etc.)

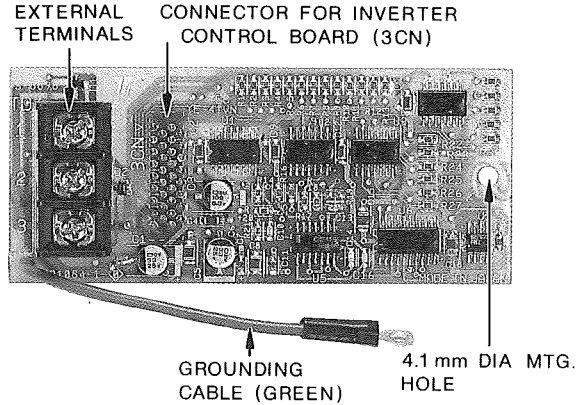
*AO-08 appears as a model number on the body of Analog Monitor Card (3G3IV-PA008)

PRECAUTIONS

- (1) Before using PA008, read the instruction manual of the applicable inverters (SYSDRIVE 3G3IV).
- (2) Before connection of PA008 connector or external terminals, turn off the inverter AC main circuit power supply and check that the inverter CHARGE indicator lamp is out.

1. SPECIFICATIONS

Output Method
Output resolution : 8 bits (1/256)
Output voltage : 0 to + 10V (non-insulated)
Output channel : 2 channels



ANALOG MONITOR CARD PA008

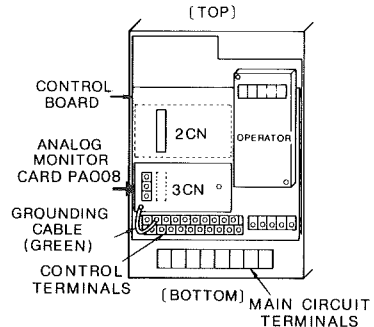
2. INSTALLATION TO INVERTER

- (1) Turn off AC main circuit power supply and remove the inverter face plate.
Check that the inverter CHARGE indicator lamp is out.
- (2) Mount PA008 connector 3CN on connector 3CN (number of pins: 34 poles) on the inverter control board. Insert the optional card support on the control board to PA008 support hole (1 point) to support the PA008.

NOTE

PA008 cannot be mounted on any connectors other than 3CN.

- (3) Connect PA008 grounding cable (green) to control terminal No. 12 on the inverter control board.
- (4) After installing of PA008 connect to peripheral equipment. When connection is completed, replace the inverter face plate.



SYSDRIVE 3G3IV

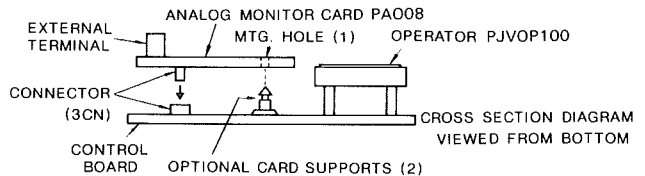
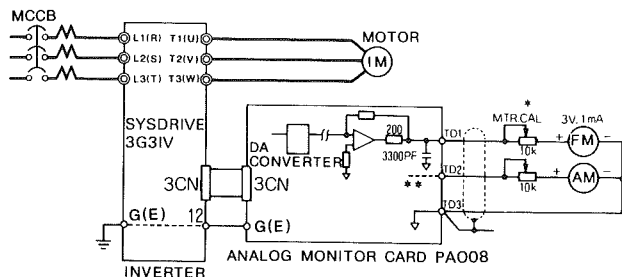


Fig. 1 Installation of Analog Monitor Card PA008

3. INTERCONNECTION BETWEEN EQUIPMENT

Fig. 2 shows interconnection of inverter with PAO08 and peripheral equipment where PAO08 output is connected to a pulse counter.



* In some applications, MTR.CAL can be omitted by setting or adjusting program constants (bn-□□).

** TD2 output circuit is the same as that of TD1.

Fig. 2 Interconnection Diagram

PRECAUTIONS FOR WIRING

- (1) Separate PAO08 control signal wiring (terminals TD1 to TD3) from main circuit wiring or other power lines.
- (2) Use shielded cable for control signal wiring and prepare the ends as shown in Fig. 3 to prevent malfunctions caused by noise. Wiring length must be 50m or less.

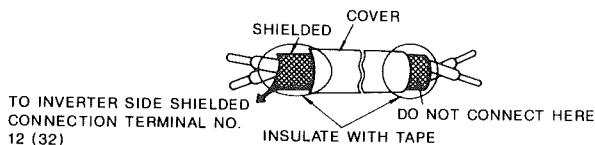


Fig. 3 Preparation of Shielded Cable Ends

4. EXTERNAL TERMINAL FUNCTIONS

PAO08 has 3 external terminals for connection with peripheral equipment. Table 1 shows the terminal functions.

Table 1

Terminal Symbol	Screw Size	Function	Signal Level	Output Accuracy	Remarks
TD1	M3	Analog signal output : channel 1 *	0 to + 10V (Output impedance 200 Ω) †	Refer to Par. 5.	Output resolution: 8 bits (1/256)
TD2		Analog signal output : channel 2 *			
TD3		Common terminal	0V		

* Output contents of TD1 or TD2 analog signal can be selected by setting the inverter program constants. For details, refer to "EXTERNAL TERMINAL OUTPUT CONTENTS AND ACCURACY".

† Output signal level of TD1 or TD2 analog signal can be adjusted by setting the inverter program constants. For details, refer to OUTPUT SIGNAL LEVEL SETTING". Output signal level can be output up to 11V by setting program constants.

5. EXTERNAL TERMINAL OUTPUT CONTENTS AND ACCURACY

Table 2 Connection with 3G3IV

External Terminal	Program Constant No	Set Value	Output Contents	Output Accuracy
TD1 Channel 1	Sn-28 1st/2nd digit	00	Output frequency : Max. frequency/100%	0.5%
		01	Output current : Inverter rated current/100%	3.0%
TD2 Channel 2	Sn-28 3rd/4th digit	10	Output voltage ref. : Input voltage/100%	1.5%
		11	DC voltage (Vpn) : 400V/100%(200V class) : 800V/100%(400V class)	1.5%

6. OUTPUT SIGNAL LEVEL SETTING

Output signal level of external terminal TD1 or TD2 can be set by 10V/□□□%.

Applicable inverter	External Terminal	Program Constant No.	Setting Range	Setting Unit	Initial Value
SYSDRIVE 3G3IV	TD1	bn-11	0 to 255%	1%	10V/100%
	TD2	bn-12			10V/200%

OMRON

OMRON Corporation
Systems Components Division
14F Nissei Bldg.
1-6-3, Osaki, Shinagawa-ku,
Tokyo 141 Japan
Tel: (03)3779-9038/Fax: (03)3779-9041

Regional Headquarters

OMRON EUROPE B.V.
Wegalaan 67-69, NL-2132 JD Hoofddorp
The Netherlands
Tel: (31)2356-81-300/Fax: (31)2356-81-388

OMRON ELECTRONICS, INC.
1 East Commerce Drive, Schaumburg, IL 60173
U.S.A.
Tel: (847)843-7900/Fax: (847)843-8568

OMRON ASIAPACIFIC PTE. LTD.
510 Thomson Road #13-03
SLF Bldg.
1129 Singapore
Tel: (65)353-2611/Fax: (65)353-5391

NOTE: Specification subject to change without notice.
Printed in Japan.