

SYSMAC CP2E-ECM series INSTRUCTION SHEET

© OMRON Corporation 2022 All Rights Reserved.

3616435-7A

Precautions for Compliance with EU Directives

Notice to Users of SYSMAC CP2E-ECM series in Europe.
This manual must be consulted in all cases in order to find out the nature of the potential HAZARDS and any actions which have to be taken to avoid them.

If the equipment is used in a manner not specified by the manufacturer, the protection by the equipment may be impaired. This product is used as industrial equipment and is defined as an in-panel device and must be installed within a control panel.

● Environment

Power Supply Voltage:	DC : 24V (85% to 110%),SELV
Ambient Temperature:	-20 to 60 °C (Avoid freezing or condensation)
Humidity:	10% to 90%RH
Altitude:	2000m Max.
Installation Environment:	Pollution Degree2 Overvoltage Category II
Indoor Use Only	

● 24-V DC power source

The external power supplies must be DC power supplies that satisfy the selv requirements.

● Source specifications

CP2E-N40DT□-D-ECM	Input: 24V DC, 40W, SELV SOURCE
-------------------	---------------------------------

● I/O specifications

INPUT specification

CP2E-N40DT□-D-ECM	24V DC, 7.5mA 10 POINTS 24V DC, 5mA 14 POINTS
-------------------	--

OUTPUT specification

CP2E-N40DT□-D-ECM	Transistor Output type (16 POINTS): 30V DC (RES, TUN, P.D.), 0.3A/P, 0.9A/C, 3.6A/U
-------------------	---

● Cleaning

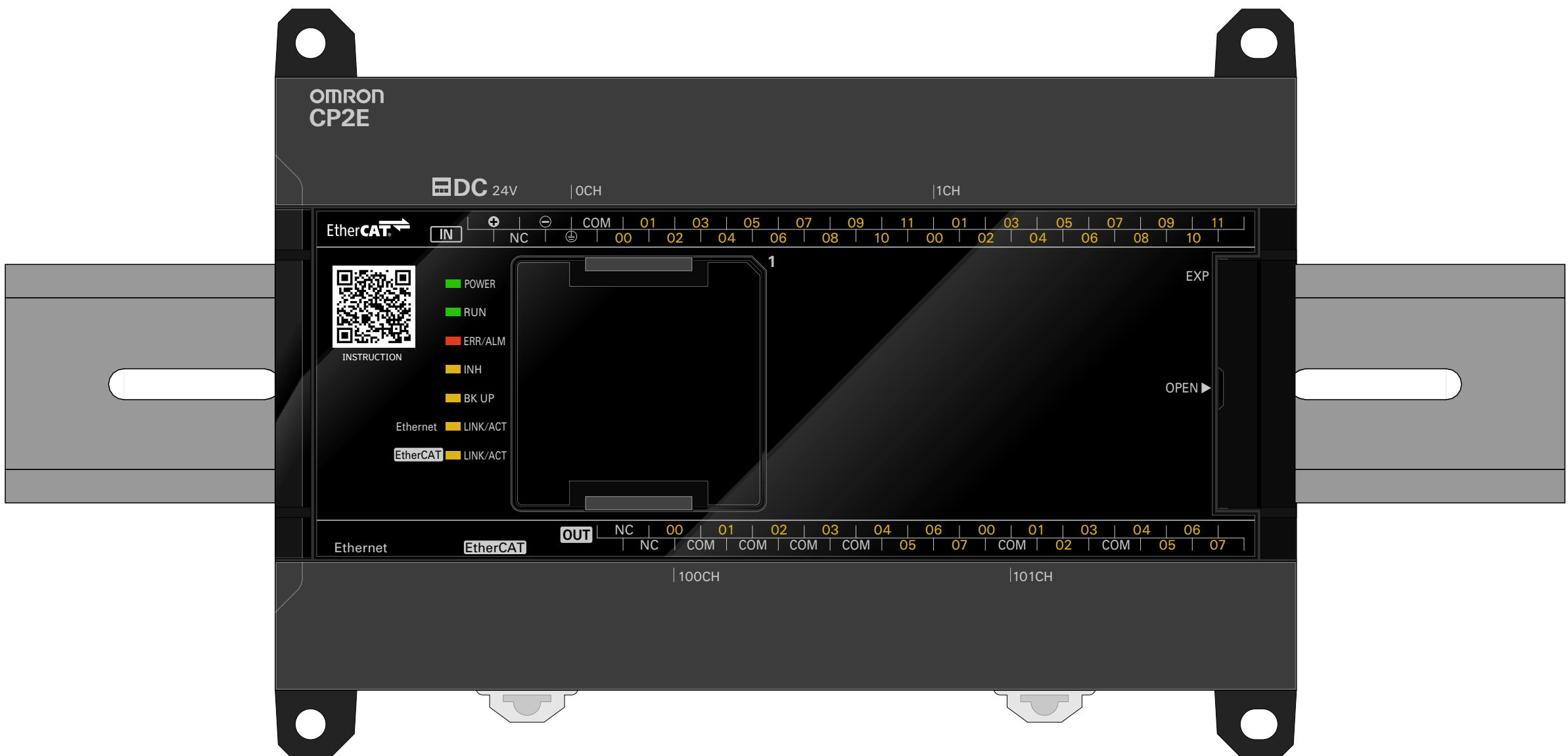
Do not use paint thinner or similar chemical to clean with. Use a dry cloth.

● Cable

Please select the cable by which rated temperature is 80°C or above.
Use Copper conductors only.

● Directions for installation

Vertical only.



● Enclosure type

You must use this product in a control board.
Enclosure type: Type 1 or more.

● Marking



:Protective conductor terminal

Tightening torque: 4.43 Lb In. (0.5 N·m)

Wire range: AWG 16 (Strand wire only)

● Expansion port

Expansion Units can be connected to the N40 CPU Unit via expansion port. Please refer to the Manual(W613) for the detail model type and restrictions.

● Battery (optional)

Mount the CP2W–BAT02 battery (sold separately) to a CP2E series CPU unit if clock data need to be retained after a power interruption.

The battery must be installed and replaced by trained service technician. Always place a trained service technician in charge of battery installation and replacement.

Be sure that the power supply to the CPU unit is turned OFF before installing and replacing the battery.

Be sure that the area is free of ignitable concentrations of flammable materials and the battery is properly locked into the battery holder when installing and replacing the battery.

The unit must be mounted in an enclosure that only accessible by the use of a tool, after the installation/replacement activity of battery.

➤ Installing the battery.

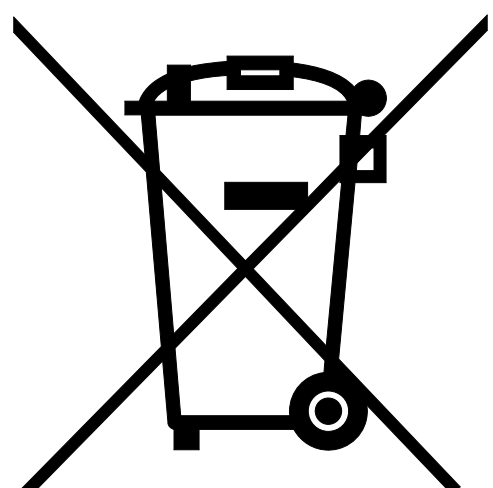
1. Open the battery holder on CPU unit. Put the new battery into the battery holder and close it.

➤ Replacing the battery.

1. Turn OFF the power supply to the CPU unit. If the CPU unit has not been ON, turn it ON for at least 30 minutes and then turn it OFF.

2. Open the battery holder on CPU unit. Put the new battery into the battery holder and close it.

Dispose of the product and batteries according to local ordinances as they apply. Have qualified specialists properly dispose of used batteries as industrial waste.



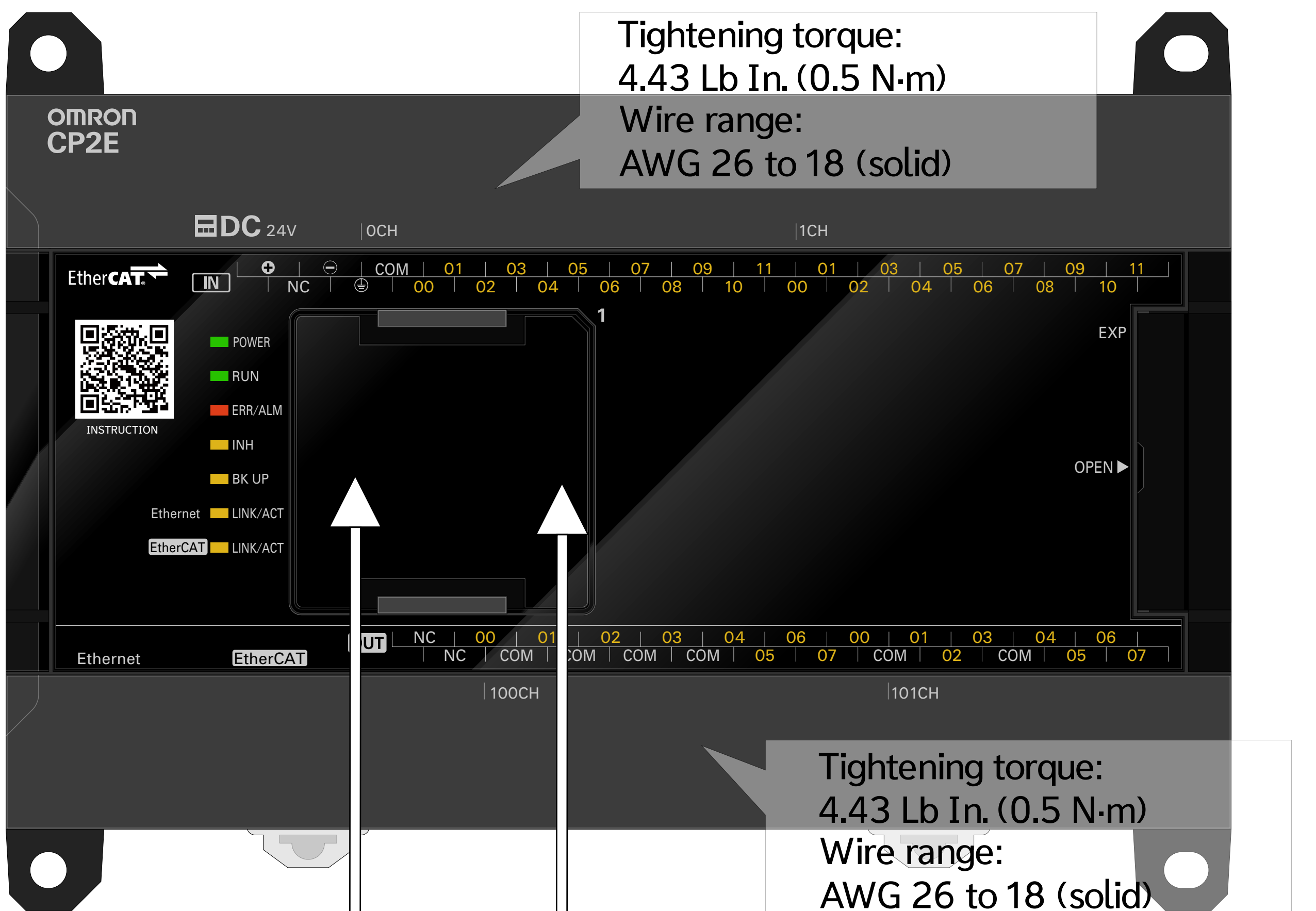
● Applicable wire size for Unit power source and I/O terminal

Type	Wire size	Strip length	Conductor surface
Solid	AWG 26-18	9mm	Plated

- Do not use ferrule terminals. Insert the solid wire directly into the terminal block.
- Do not insert more than one wire in one terminal.
- Please select wire sizes suitable for rated current.

Wire size	Current (Max)
AWG 26 - 24	2A
AWG 22	3A
AWG 20 - 16	5A

● N40DT □ -D-CPU TYPE

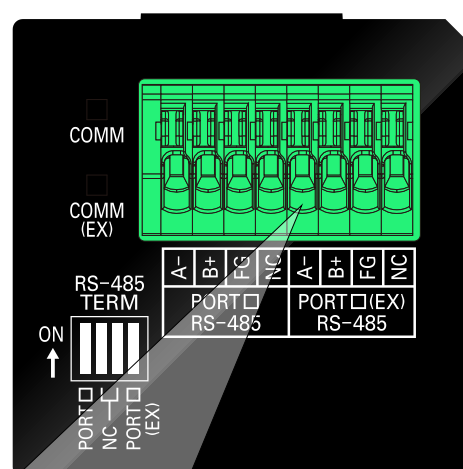


CP2W-CIFD □
RS-232C/RS485
Option Board

CP1W-CIF01
RS-232C
Option Board

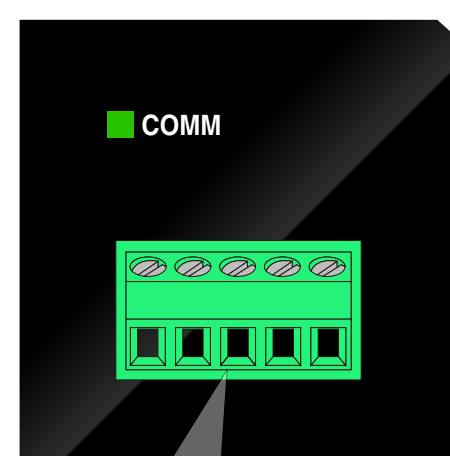
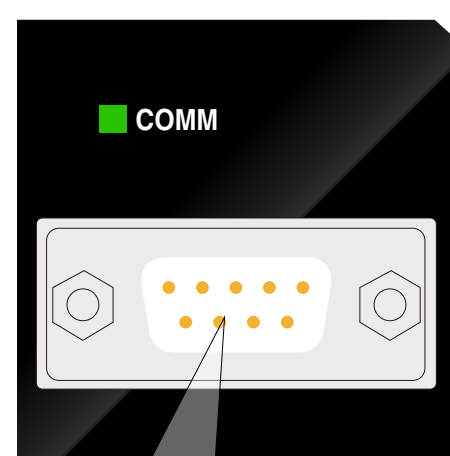
CP1W-CIF11
CP1W-CIF12-V1
RS-422A/485
Option Board

CP1W-ADB21
CP1W-DAB21V
CP1W-MAB221
Analog Option board

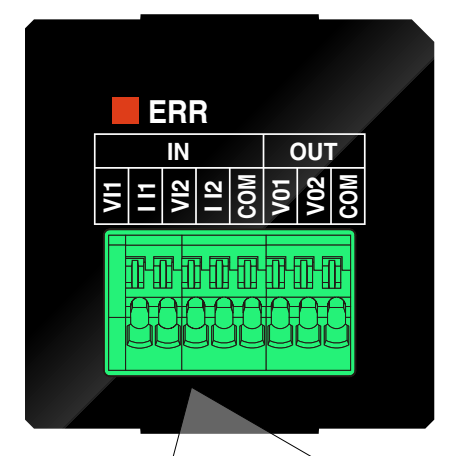


Wire size: AWG 20 - 26
(solid / strand)

Recommended cable:
XW2Z Series

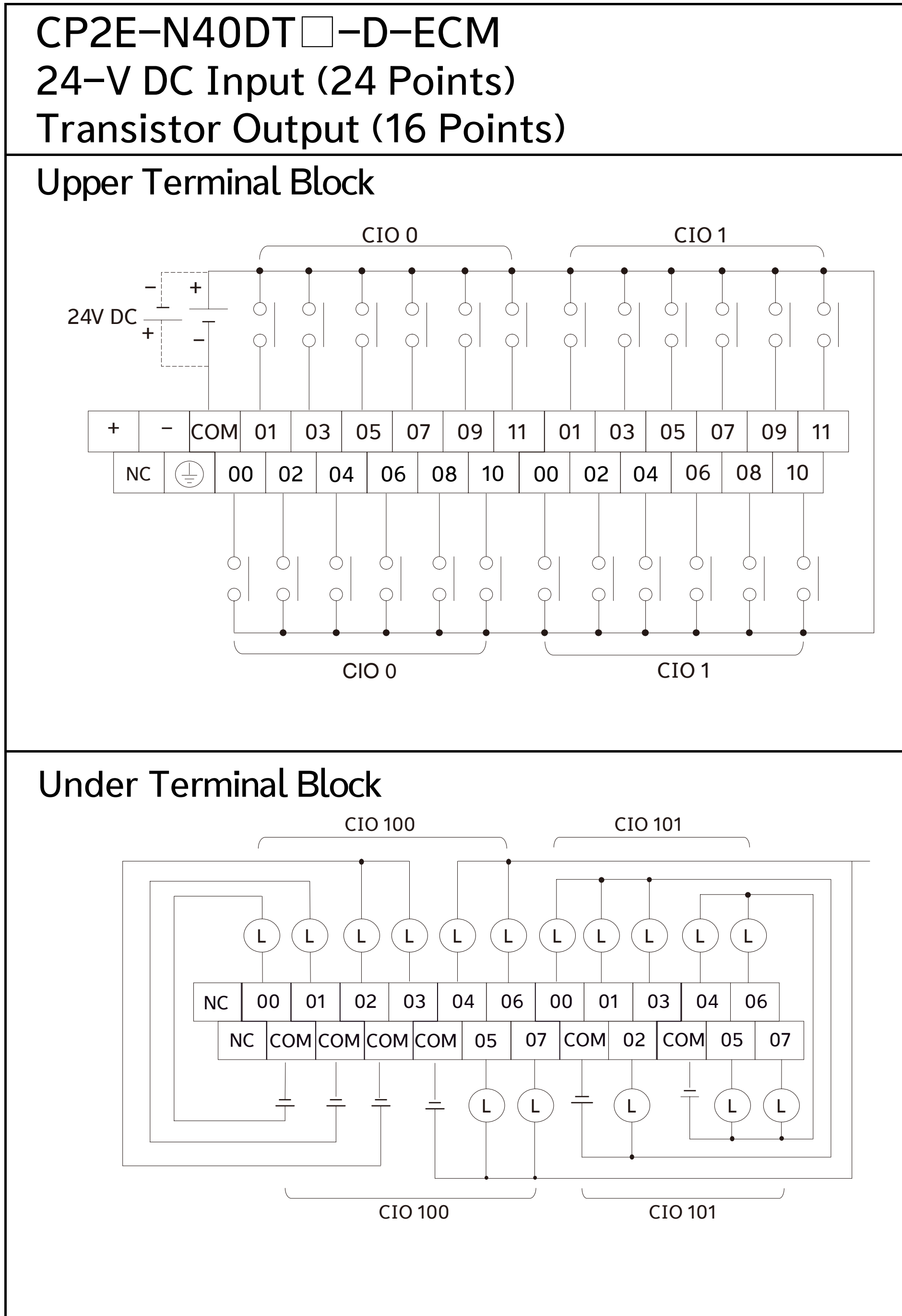


Tightening torque:
2 Lb In.(0.23N·m)
Wire range:
AWG 30 to 16
(solid/strand)



Wire size: AWG 20 - 26
(solid / strand)

● I/O Wiring Diagram



Conformance to EU Directives

This product is EMC-compliant when assembled in PLC system or Machine Automation Controller. To ensure the EU Directive conformance of customer's machinery or equipment in which the product is incorporated, be sure to observe the following precautions.

1. This product is defined as an in-panel device and must be installed within a control panel.
2. This product is intended to be used in EMC Zone B.
3. This product complies with the common emission standard (EN61131-2) with regard to EMI. For the radiated emission requirement (10-m regulations), in particular, please note that the actual emission varies depending on the configuration of the control panel to be used, the connected devices, and wiring methods. Therefore, the customer must confirm the EU Directive conformance of the overall machinery or equipment by themselves, even if this EU conforming product is used.

This equipment is not intended for use in residential environment. In residential areas it may cause radio interference, in which case the user maybe required to take adequate measures to reduce interference.